

Issue 4

by **annie.com**

2017 - 2018

NEW!
PATTERNS
VIDEOS
MESH

Pictured: The Ruler Wrap, coming soon!
featuring Flourish by Mia Whittmore from Windham

INTRODUCING Add-on Videos™

The best of online merged with a “shop local” focus!
Available for a select number of patterns, Add-on Videos™ support specific parts of the pattern and help you learn our best techniques. Videos don't replace the pattern. They enhance the sewing experience!

To support local quilt shops, related paper patterns include a coupon for the value of the Add-on Video™. This is a \$5.00 value. You can then use the coupon to get the video for free on our website.

Check with your local quilt shop for stock or visit us online.



Find my Add-on Video™

Round Trip Duffel

Pack it all in style
A mid-sized duffel, perfect for weekend trips! Features include a handy trolley sleeve to slip over handles on rolling luggage, wide-opening top and plenty of room inside.

12"H x 19½"W x 7½"D.
PATTERN ONLY — PBA267 — \$9.95
Pictured: Night Music by Amy Butler for Free Spirit



MAIN FABRIC
COORDINATING FABRICS
SUP209 TURQUOISE MESH
HAR1.5-AB-SET-2850
ZIP30, ZIP40-212 TURQUOISE



Find my Add-on Video™

Glo and Go

Carry makeup and more
Store your essentials in style with this handy wrap and bag. The easy-to-clean vinyl lining, clear vinyl flap, and a variety of mesh pockets make travel and organization a breeze!

Wrap: 9½"L x 15½"W open; Bag: 5¾"H x 9½"W x 2"D
PATTERN ONLY — PBA269 — \$9.95
Pictured: Avalon by Joel Dewberry for Free Spirit



MAIN FABRIC
COORDINATING FABRICS
ZIP30-245 TAHITI
HAR1-N-350
SUP209 TAHITI MESH

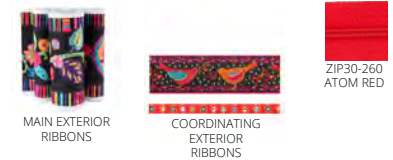


Find my Add-on Video™

Renaissance Ribbon Bags

Add a little luxury
Simple and quick, these bags become exquisite masterpieces with an exterior made entirely of ribbons and velvet border. Plus, no unfinished seams inside!

Small: 5¾"H x 7"W x 2"D; Large: 5"H x 10½"W x 3"D
PATTERN ONLY — PBA266 — \$9.95
Pictured: Designs by Odile Bailloleul for Renaissance Ribbons



MAIN EXTERIOR RIBBONS
COORDINATING EXTERIOR RIBBONS
ZIP30-260 ATOM RED

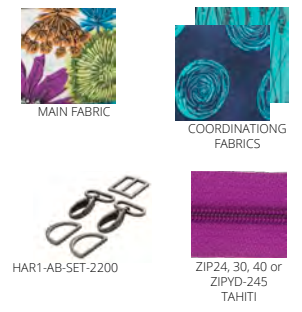


Find my Add-on Video™

I'll Drink To That

Party ready
This carrier has two zippered front pockets and a removable, collapsible four-section padded inner divider to hold up to four standard-sized bottles. Great for picnics or your next soirée.

13"H x 7"W x 7"D
PATTERN ONLY — PBA263 — \$9.95
Pictured: Maker's Home by Natalie Barnes of Beyond the Reef for Windham



MAIN FABRIC
COORDINATING FABRICS
HAR1-AB-SET-2200
ZIP24, 30, 40 or ZIPYD-245 TAHITI

BRAND NEW PATTERNS FEATURING ADD-ON VIDEOS™

New & Improved: ByAnnie's 2.0

Awesome illustrations. Cleaner layouts. Best techniques.

We revamped these classics. You're sure to love the awesome illustrations, easier-to-read fonts, cleaner layouts, and complete labels for all pieces. Instructions have been updated, too, to incorporate Annie's newest and best techniques. Finally, where appropriate, we've added mesh pockets, a trolley sleeve, magnetic closures and more!



Travel Duffel 2.0

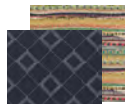
13"H x 21"W x 8"D

PATTERN ONLY — PBA203-2 — \$9.95

Pictured: Indie Folk by Pat Bravo for Art Gallery Fabrics



MAIN FABRIC



COORDINATING FABRICS



ZIP30-235 NAVY



HAR1.5-AB-SET-2850



Got Your Back 2.0

14"H x 9" to 12"W x 4" to 6"D

PATTERN ONLY — PBA226-2 — \$9.95

Pictured: Wild Nectar by Crystal Manning for MODA



MAIN FABRIC



COORDINATING FABRICS



ZIP30-190 BUTTERCUP



HAR1-AB-SET-2100

New Colors of ByAnnie's Lightweight Mesh

Two new colors to bring your projects to life.

ByAnnie's Lightweight Mesh is perfect for pockets on bags or anywhere you want to be able to see what you are storing,

Two useful sizes

18" x 54" package SUP209-XXX - \$5.99

15 yard x 54" roll SUP209-15YDXXX - \$149.99

- Black
- White
- Apple Green
- Atom Red
- Blast Off Blue **NEW**
- Dandelion
- Lipstick
- Natural
- Navy
- Parrot Blue
- Pewter
- Pumpkin **NEW**
- Tahiti
- Turquoise

Connect with us!

www.ByAnnie.com

info@byannie.com

[@patternsbyannie](https://www.instagram.com/patternsbyannie)

